

Monitoring Dashboard for Managing Drought Risk on the Ranch

Tonya Haigh



NATIONAL DROUGHT
MITIGATION CENTER
UNIVERSITY OF NEBRASKA

January 27, 2022

Making Decisions on the Ranch During Drought

- During drought, livestock grazers have lots to decisions to make
 - What drought response is needed
 - When drought response is needed
 - What conditions will trigger the response
 - How to carry out response



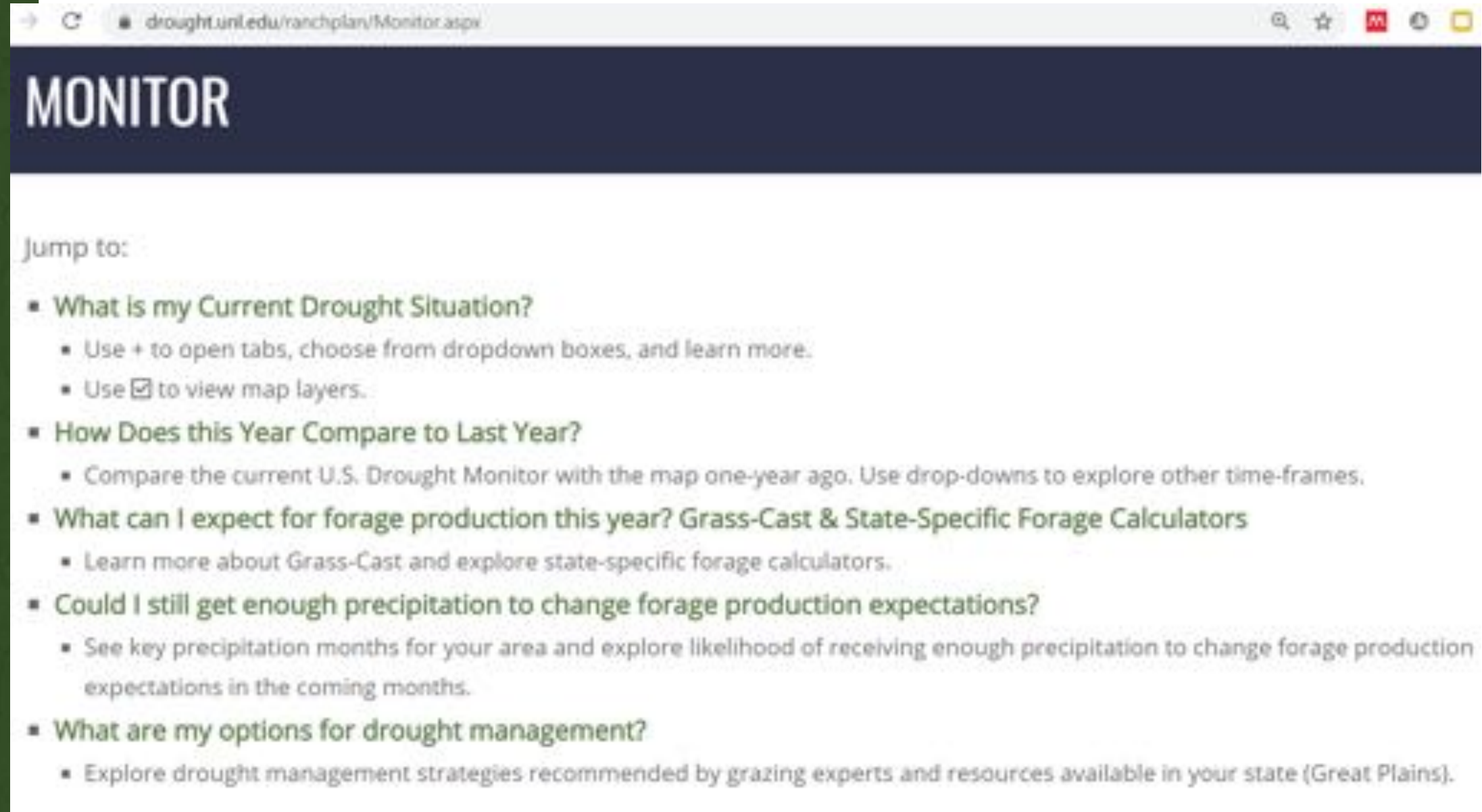
Can Drought Monitoring Info Help Grazers Make Decisions Earlier or More Easily?

- What drought response is needed
- When drought response is needed
- What conditions will trigger the response
- How to carry out response

Need usable monitoring tools to address these!



<https://drought.unl.edu/ranchplan/Monitor.aspx>



MONITOR

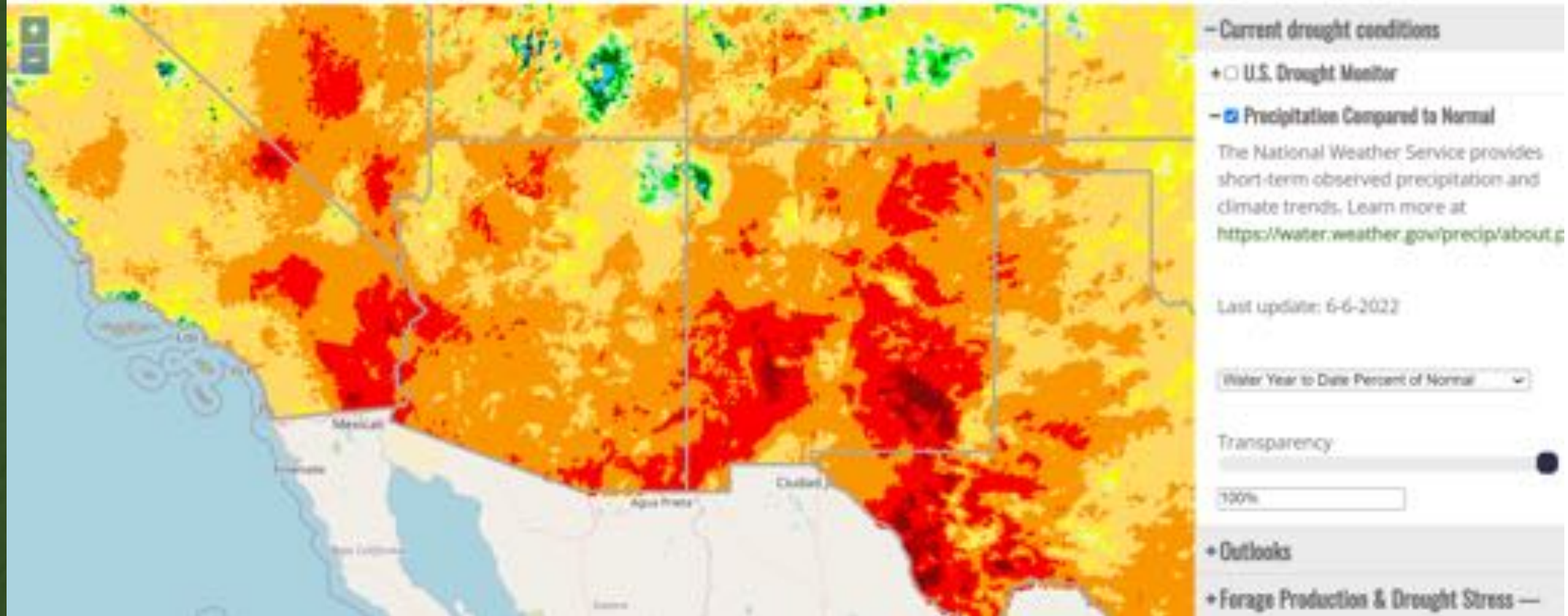
Jump to:

- **What is my Current Drought Situation?**
 - Use + to open tabs, choose from dropdown boxes, and learn more.
 - Use to view map layers.
- **How Does this Year Compare to Last Year?**
 - Compare the current U.S. Drought Monitor with the map one-year ago. Use drop-downs to explore other time-frames.
- **What can I expect for forage production this year? Grass-Cast & State-Specific Forage Calculators**
 - Learn more about Grass-Cast and explore state-specific forage calculators.
- **Could I still get enough precipitation to change forage production expectations?**
 - See key precipitation months for your area and explore likelihood of receiving enough precipitation to change forage production expectations in the coming months.
- **What are my options for drought management?**
 - Explore drought management strategies recommended by grazing experts and resources available in your state (Great Plains).



Precipitation on Specific Dates May be a Trigger

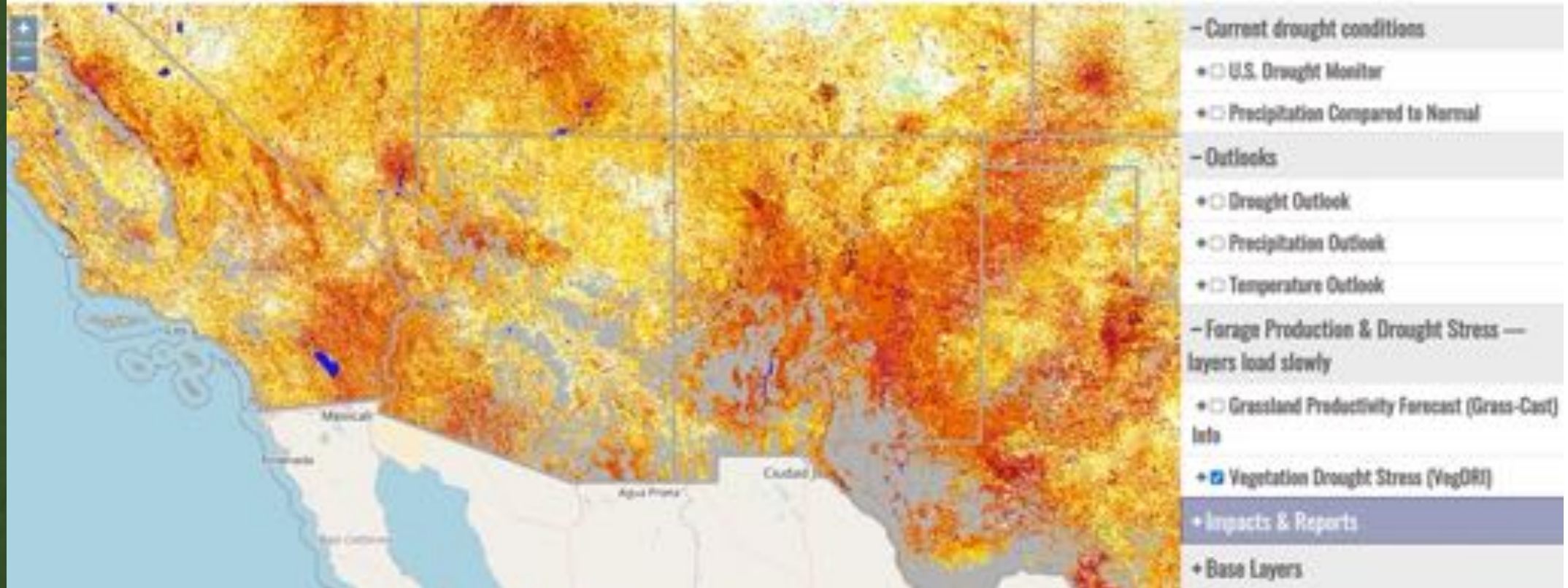
WHAT IS MY CURRENT DROUGHT SITUATION?



<https://drought.unl.edu/ranchplan/Monitor.aspx>

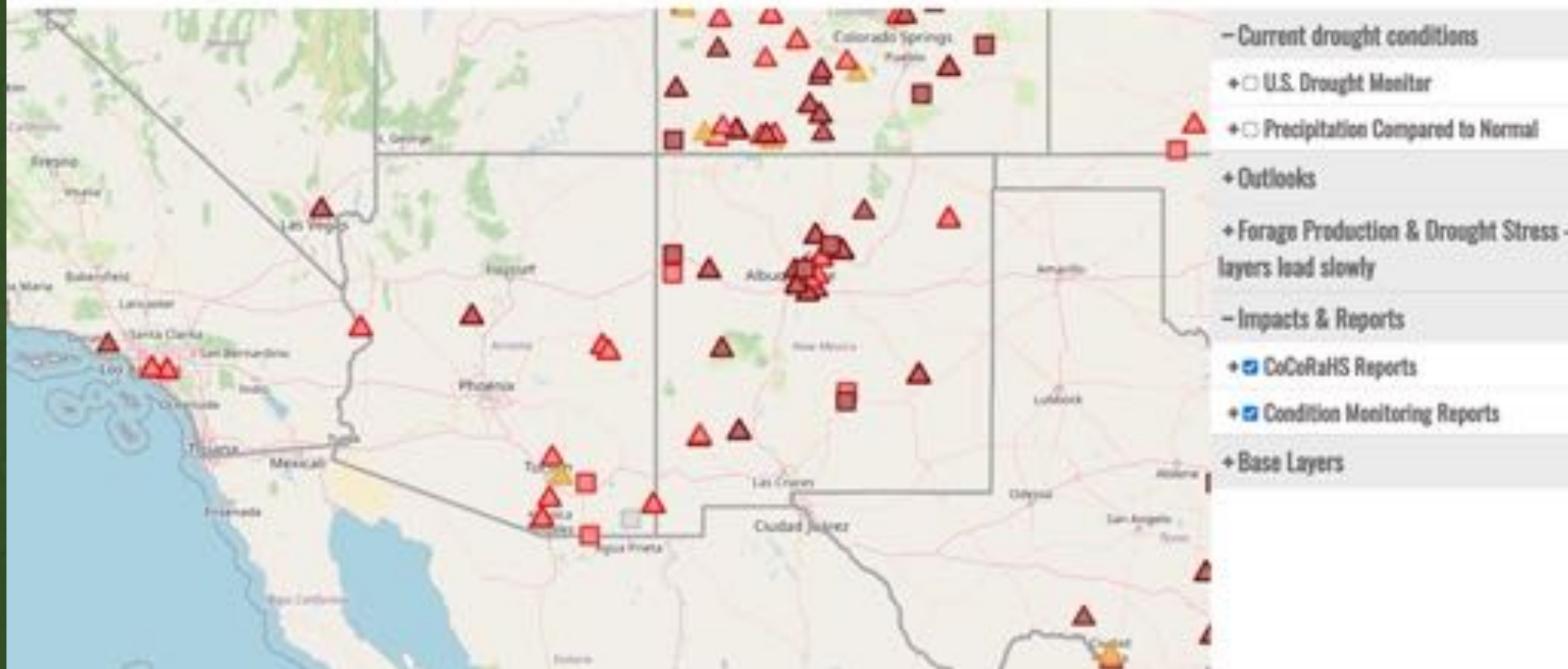
Vegetation Conditions - VegDRI

WHAT IS MY CURRENT DROUGHT SITUATION?



<https://drought.unl.edu/ranchplan/Monitor.aspx>

WHAT IS MY CURRENT DROUGHT SITUATION?

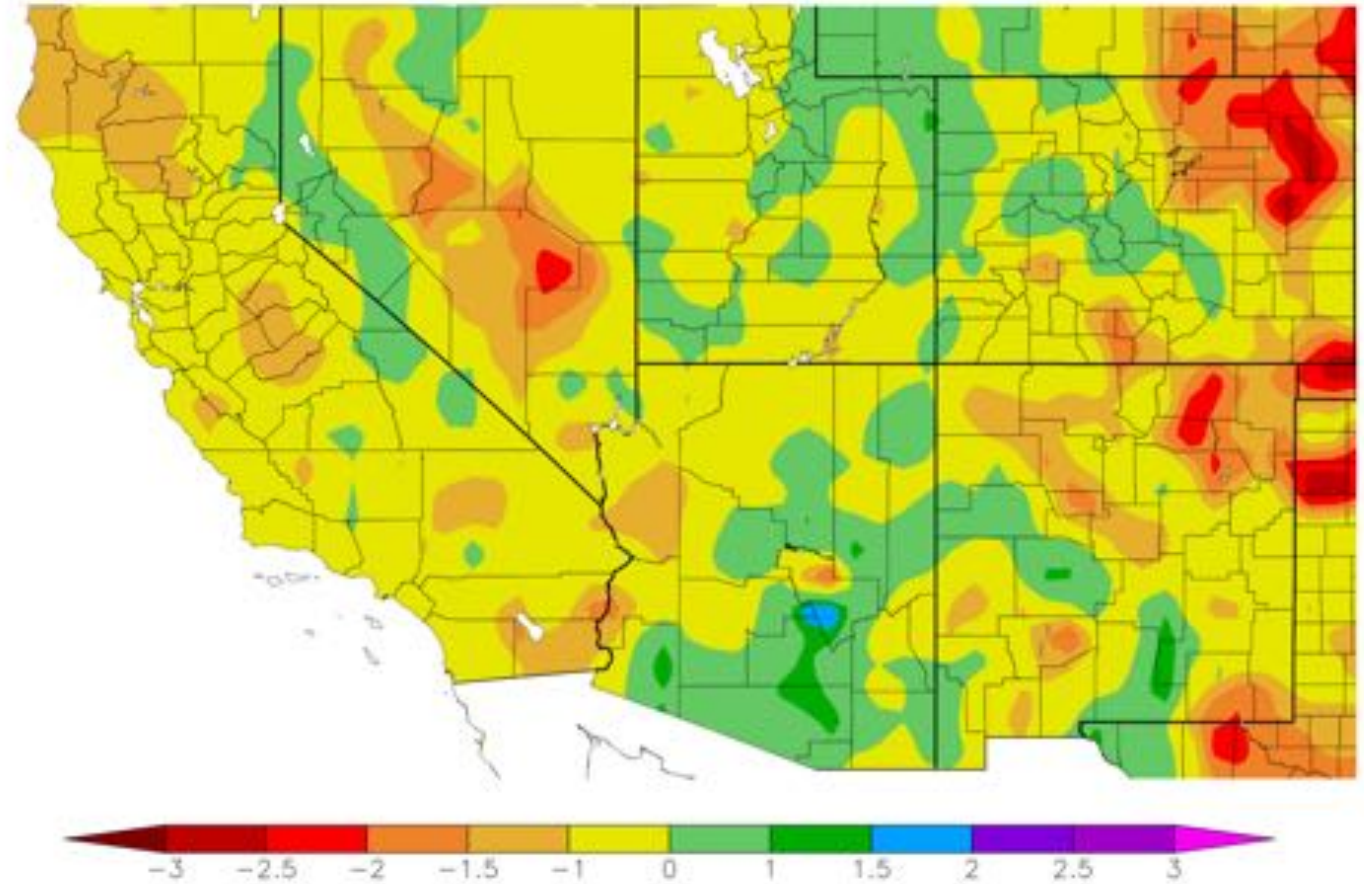


<https://drought.unl.edu/ranchplan/Monitor.aspx>

12 Month SPI
6/7/2021 - 6/6/2022

Additional Key Info
for Southwest
Grazers on Public
Lands:

- Triggers Forest Service evaluation of grazing allotments

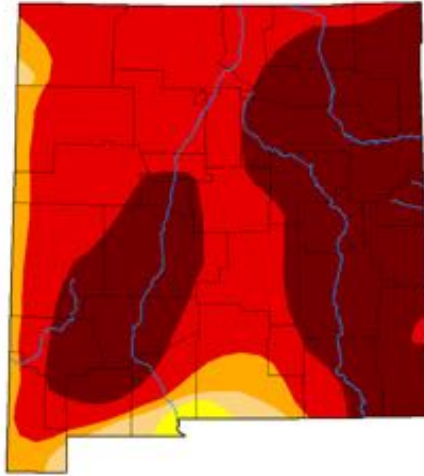


Generated 6/7/2022 at HPRCC using provisional data.

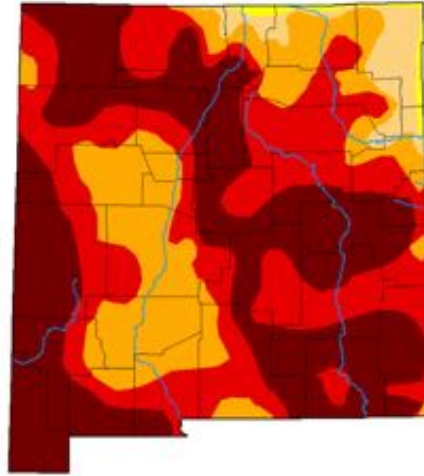
NOAA Regional Climate Centers



HOW DOES THIS YEAR COMPARE TO LAST YEAR?



< May 31, 2022 >



< June 1, 2021 >

Dashboard currently allows comparison of two different time periods

- Historical Avg.
 - Very Wet
 - Wet
 - Median
 - Dry
 - Very Dry
 - Extremely Dry

Compared to:

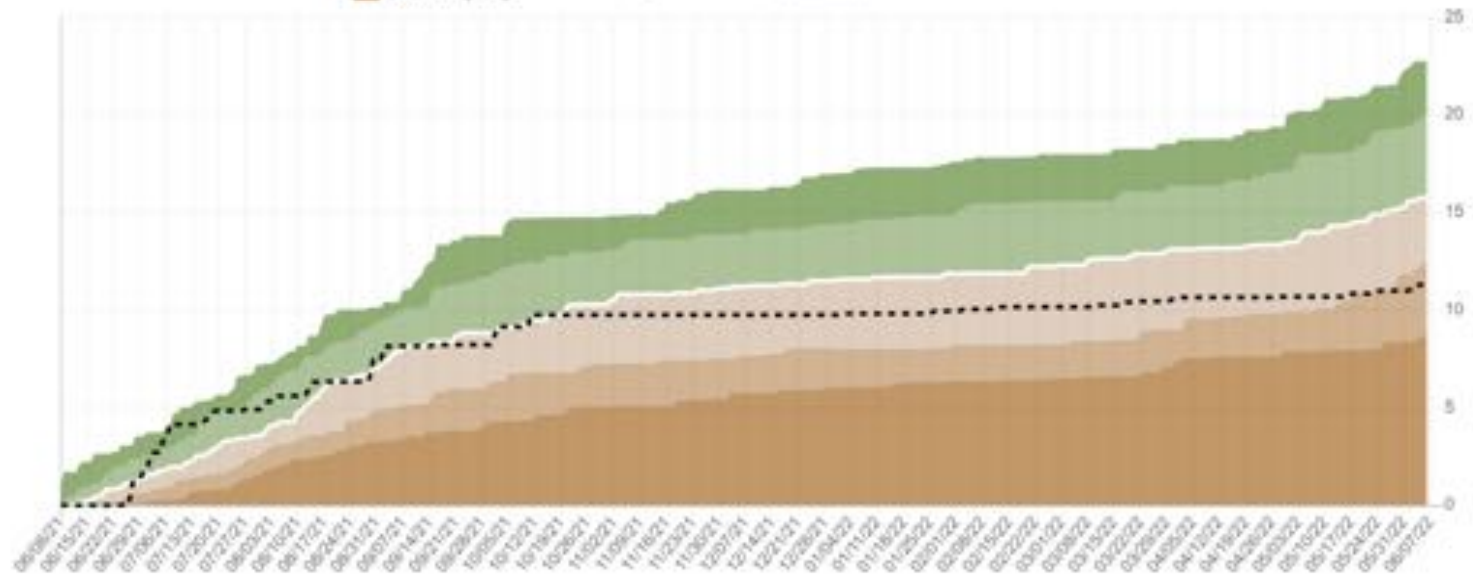
Another Year

Select prior year(s) for comparison

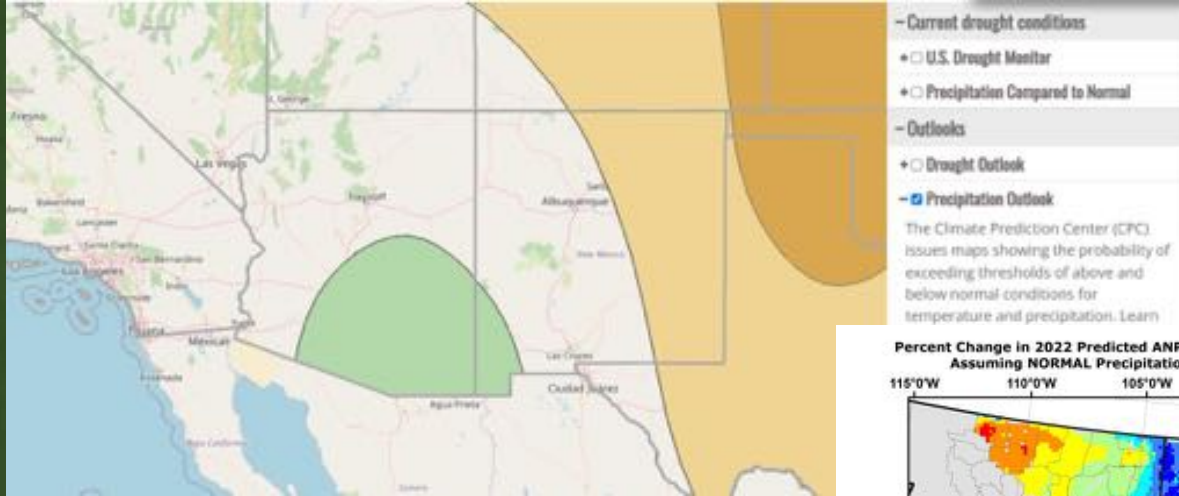
Year values relative to date range. Your selections will change when date range changes

- Observation
- Estimated

MyRAINge Log allows comparison of current precip for year compared to historical averages

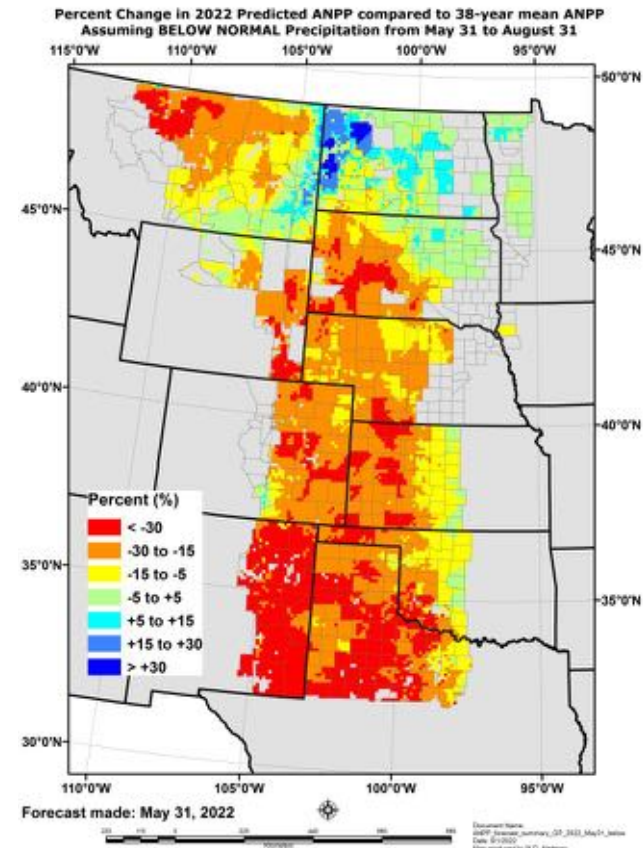
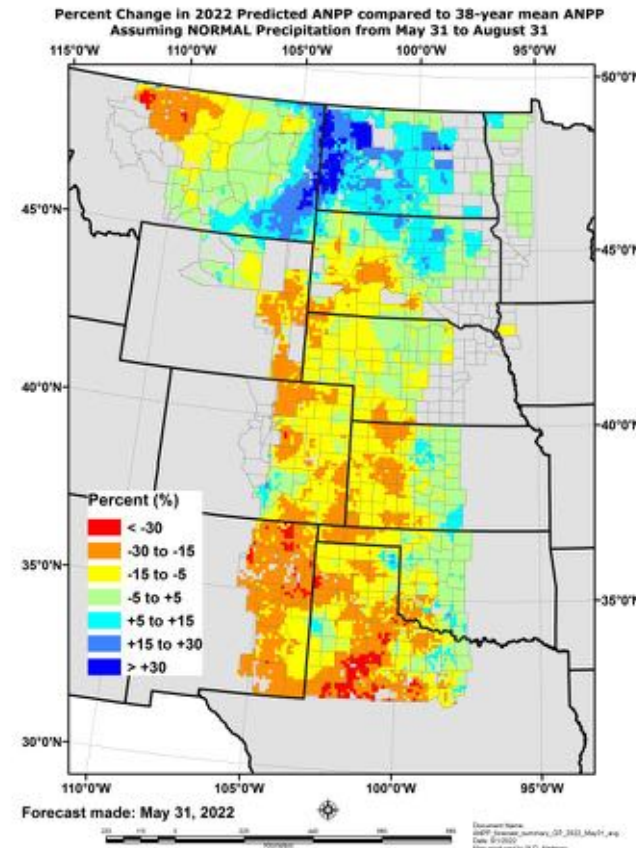
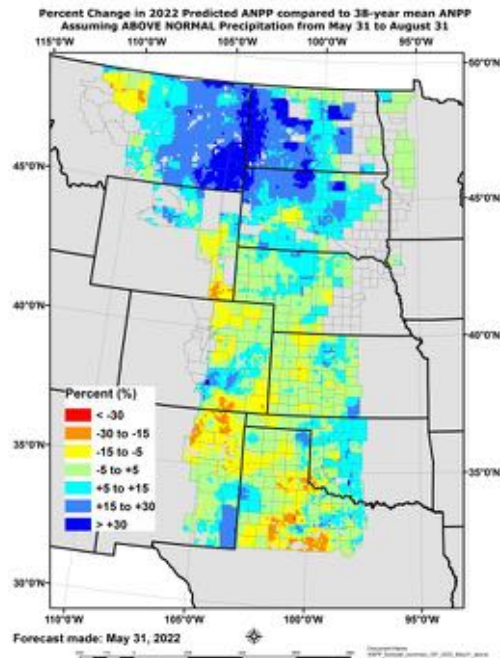


WHAT CAN I EXPECT FOR FORAGE PRODUCTION THIS YEAR? GRASS-CAST & STATE-SPECIFIC FORAGE CALCULATORS



Use dashboard to inspect 3-month precipitation outlook

Use outlook to explore possible futures for forage productivity



<https://drought.unl.edu/ranchplan/Monitor.aspx>

WHAT'S THE LIKELIHOOD OF GETTING ENOUGH PRECIPITATION TO CHANGE FORAGE PRODUCTION EXPECTATIONS?

Critical Precipitation Months for Forage Production

Research shows that the months in gray are most important for receiving precipitation that affects forage growth. After this time, precipitation does not greatly change forage production expectations for the current year.

		Oct	Nov	Dec	Jan	Feb	Mar	Apr	May	Jun	Jul	Aug	Sep
Northern & Central Plains	Smart et al. (2019)												
Colorado Plateau	Schwinning et al. 2004												
Rocky Mountains	Personal communication — reference needed												
Southwest (AZ & NM)	Personal communication — reference needed												

Warm-season grass production based on Monsoon season



<https://drought.unl.edu/ranchplan/Monitor.aspx>

WHAT ARE MY OPTIONS FOR DROUGHT MANAGEMENT?

Find resources and suggestions for adjusting forage supply and demand strategies during drought.

- Hay Exchange (most states)
- Drought Management Strategy Library
- Resources by State
- Learn about other ranchers' drought management plans
- Learn more: <https://drought.unl.edu/ranchplan/DuringDrought.aspx>

Search Library by:

Results

Show 10 entries

Search:

Agriculture (Livestock) Subsectors

- Grazing Management
- Forage/Feed
- Destocking
- Water Management
- Animal Health
- Ranch Family Health
- Financial Management
- Ranch Other
- Policy

Activity Type


- Mitigation/Adaptation (pre-drought)
- Drought Response
- Monitoring and Assessment

Title	Resource Type	Location(s)	Date	Featured
Beef Cow-Calf Management Options When Pasture is Limited	Fact Sheet	All States	8/1/2014	Yes
Extension Disaster Education Network Drought Resources	Website	All States	8/16/2013	Yes
Moving cattle of the ranch as a strategy to cope with drought	Fact Sheet	All States	8/1/1999	Yes
Drought strategies for ranchers	Reports	California Colorado	1/1/2006	
Drought management strategies for small acreage pastures	Fact Sheet	Colorado	4/1/2003	
Drought Management Planning - URL Beef Extension	Website	Nebraska	11/28/2017	
Drought Management Planning for Cows/Calves	Drought Plans	Nebraska	1/1/2017	



MONITOR

Jump to:

- **What is my Current Drought Situation?**
 - Use + to open tabs, choose from dropdown boxes, and learn more.
 - Use  to view map layers.
- **How Does this Year Compare to Last Year?**
 - Compare the current U.S. Drought Monitor with the map one-year ago. Use drop-downs to explore other time-frames.
- **What can I expect for forage production this year? Grass-Cast & State-Specific Forage Calculators**
 - Learn more about Grass-Cast and explore state-specific forage calculators.
- **Could I still get enough precipitation to change forage production expectations?**
 - See key precipitation months for your area and explore likelihood of receiving enough precipitation to change forage production expectations in the coming months.
- **What are my options for drought management?**
 - Explore drought management strategies recommended by grazing experts and resources available in your state (Great Plains).

[Provide Feedback](#)



Tonya Haigh
thaigh2@unl.edu
@TonyaHaigh

drought.unl.edu/ranchplan
Drought.unl.edu/ranchplan/monitor.aspx



drought.unl.edu



@droughtcenter



@droughtcenter

